

CES-5P - Industrial GPS Fleet Management

Features

- ◆ High Sensitivity GPS
- ◆ Real time location and speed updates
- ◆ Dual-band CDMA 1xRTT (IS-2000)
- ◆ Internal auto calibrating 3-axis accelerometer
- ◆ Multiple inputs and outputs
- ◆ Over-the-air configuration and firmware management
- ◆ Thousands of store/forward messages
- ◆ Multiple polygon geo-fences (up to 50 vertices each)
- ◆ Multiple landmarks
- ◆ Direct email report and alert delivery
- ◆ Voltage monitoring and low battery notification
- ◆ NMEA GPS output
- ◆ Backup battery support (external lead-acid)

General

- ◆ Ruggedized GPS Tracking Device
- ◆ Material Extruded Aluminum w/ flanges
- ◆ Compact Size: (LxWxH) 4.1 x 3.4 x 1.1 inches (104 x 86 x 28 mm)
- ◆ Weight: 6.5 ounces, 182 grams
- ◆ External Antennas for maximum performance



High Sensitivity
SuperSense GPS

CDMA-5P—Product designed/manufactured in the USA

The CES-5P provides an affordable tracking and fleet management device for security and asset tracking applications.

The CES-5P is a highly configurable, feature rich, mobile asset tracking device designed to service a wide variety of market and industry requirements. The device is an ideal solution for Mobile Resource Management, vehicle tracking and many other location aware applications and services. The device incorporates leading edge, quality components for superior reliability including a SuperSense GPS module.

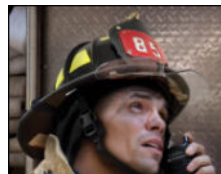
The versatile CES-5P configuration capabilities support everything from basic vehicle tracking to full featured service applications.

Tracking Software Support

POWER-trak3 - Professional Enterprise Suite

FleetLinc - Web Tracking Service

Fleet-Control AP - Your Software



CES WIRELESS TECHNOLOGIES CORP.
925-122 S. Semoran Blvd
Winter Park, FL 32792 USA



Tel: 407-679-9440 (USA) 800-327-9956
Fax: 407-679-8110
e-mail: sales@ceswireless.com
Web Site: <http://www.ceswireless.com>

CES-5P - Industrial GPS Fleet Management

Intelligent Event Manager

Provides programmable parameters for GPS update rate, speed exceptions, geo-zones, ignition monitoring, panic alarm and idle time etc.

Input/output and Peripheral Support

The CES-5P I/O capabilities enable multiple configurations, peripheral support and monitoring including digital inputs and outputs, relays, serial and 1-wire peripheral communication, vehicle conditions and activity. The CES-5P supports Driver ID, GPS data (NMEA) and other peripheral applications.

Easy Over The Air Servicing (Patented Technology)

The CES-5P configuration parameters and firmware are upgradeable over-the air and can be pushed to the CES-5P using IP or text messaging or autonomously pulled by the CES-5P from any TFTP or FTP server. This allows feature updates to be deployed to a fleet of CES-5P's with minimal user intervention and without proprietary server software. This reduces field service visits and can prolong the serviceable life of the CES-5P.

Accessories

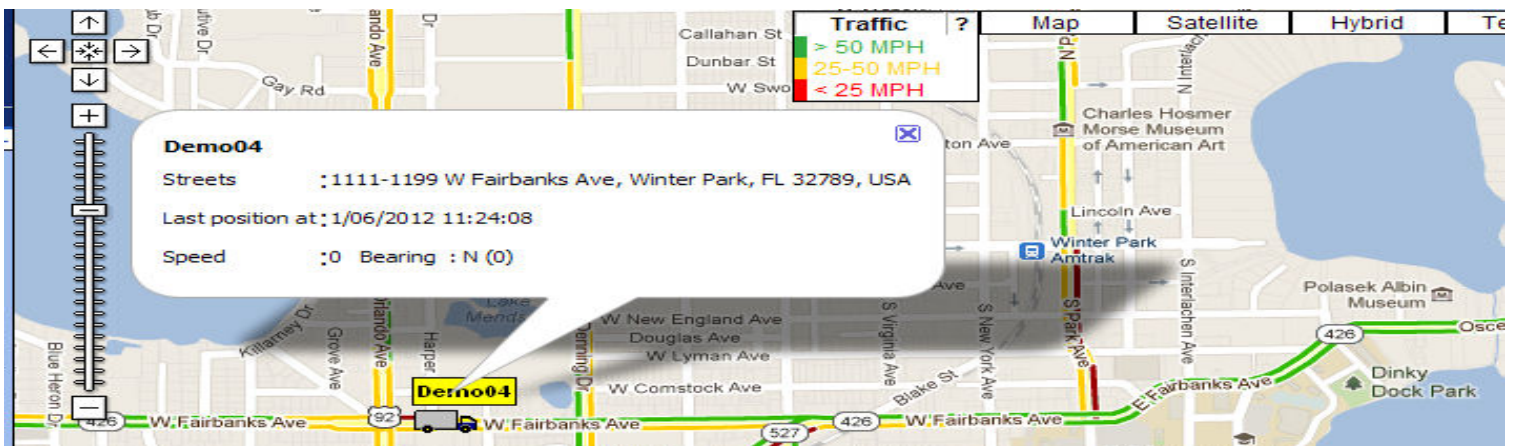
- GPS/Cellular Covert Antenna
- Power Harness
- Serial Data Cable
- Port Expander
- J-Box

Location Monitoring & Fleet Management Software

POWER-trak3 - Professional Enterprise GPS Tracking, Security and Management Software (PC/Desktop/Server/Cloud/Web), no monthly fee.

FleetLinc GPS Web Tracking Server (subscription required). Subscribers can log onto the web site and view the current and historical activity of the user, and run comprehensive reports and activity analysis, or

Fleet-Control API, is a low cost background software module running on your server that provides bi-directional integration of the solution to non-CES software systems, e.g. 911, CAD etc, or. It supports ALL CES subscriber devices in one protocol, negating the need to develop an interface to separate devices.



CES-5P - Industrial GPS Fleet Management

PHYSICAL SPECIFICATIONS

Material Extruded Aluminum w/ flanges
Dimensions (LxWxH) 4.1 x 3.4 x 1.1 inches
104 x 86 x 28 mm
Weight 6.5 ounces, 182 grams
GPS antenna conn. SMA
Cellular antenna conn. SMC
Power/Aux connector 20-pin 3mm Molex
Data connector 10-pin 3mm Molex

COMMUNICATION

Quad-Band CDMA2000 1xRTT (IS-2000)
Band class 0 (Tx:824-849 MHz/Rx:869-894 MHz)
Band class 1 (Tx:1850-1910 MHz/Rx:1930-1990 MHz)
Data Rates 153 kbps forward and reverse
Output Power 0.25W CDMA

ELECTRICAL SPECIFICATIONS

Operating Voltage 8 to 30V DC
Power Consumption (typical, @ 12.8 vdc)
Operating 95mA (avg), 680mA (peak Tx)
Standby 2 (SMS/UDP wake-up) 35mA
Standby 1 (local wake-up) 13mA
Sleep (Ignition only wake-up) <2mA

INPUTS/OUTPUTS

Digital Inputs 5 (3 hi, 2 low)
Analog Input 1
Relay Drive Outputs 4 (150mA max. each)
Switched 12V output 1 (1.2A max.)
LED drive Output 1
RS-232 port 1 (5-wire)

GPS TECHNOLOGY (SuperSense Technology)

GPS Receiver 50 Channel L1 C/A Code, WAAS/SBAS
Sensitivity -161dBm Tracking, Nav, Reacquisition
-143dBm Cold start (un-aided)
Horizontal accuracy 2.5m, 2.0m SBAS (CEP 50%)
Time-to-first-fix 27s (@ -130dBm, Cold start)

ENVIRONMENTAL SPECIFICATIONS

Operating -4° to 131°F (-20°C to 55°C)
Storage -40° to 185°F (-40°C to 85°C)
Humidity 5 to 95% non-condensing
Shock and Vibration SAE J1455
EMC/EMI SAE J1113

REGULATORY APPROVALS

FCC, IC

CES Compatible Mapping/Dispatch Software

FleetLinc - Web Based Subscriber Service
POWER-trak3 - PC/Client/Server/Cloud/Web
FleetControl—API integrates solution to third party non-CES software systems, e.g. 911, CAD etc.

Warranty

One Year



Dealer/Distributor: