

GPS-206 Industrial Fleet Management with VOICE

Features

- ◆ Provides GPS Position Reporting
- ◆ Advanced Exception Reporting
- ◆ Accepts any Voice Call (external headset)
- ◆ Dials one Preprogrammed Telephone Number
- ◆ geo-ZONES for Entry and Exit Reporting
- ◆ Battery Back-up
- ◆ No Movement / No GPS data - Alarm
- ◆ Auxiliary input x 2, Auxiliary Output x 1
- ◆ Geo-Fencing, Mileage, Alarm Reporting
- ◆ Serial port for external connection
- ◆ Internal diagnostics capability
- ◆ Message memory when out of cellular coverage
- ◆ Flash memory, extensive on board RAM

General

- ◆ GSM//GPRS cellular, GPS and GSM Voice Calling
- ◆ True real time location and speed updates
- ◆ Back-up Battery
- ◆ Compact Size: 65 x 61 x 26mm
- ◆ : 2.6 x 2.4 x 1.0 inches
- ◆ Weight: 0.5lbs
- ◆ Ruggedized GPS Tracking Device
- ◆ Optional Headset for Voice Calling

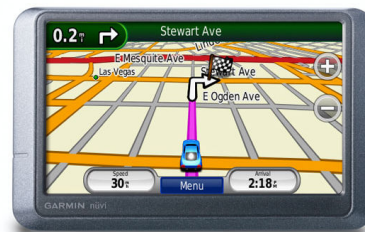


Presenting the **GPS-206** – one of the smallest, most economical and powerful Fleet Management devices available today, with battery back-up and voice support.

This ruggedized, industrial styled, in-vehicle device is compatible with the GSM/GPRS cellular wireless network and operates from 9 to 30 V DC. It is also compatible with the CES FleetLinc web-based fleet management subscriber service and POWER-trak3 Enterprise PC/Server Tracking and Fleet Management Software

The unit is designed for demanding mobile environments where performance and reliability are essential. The unit is also provided with external auxiliary inputs and output to connect to vehicle sensors and controls.

For Voice operation, the M60 Headset is an easy to use device from Plantronics. Its over-the-ear design provides stability and the boom-mounted microphone offers clear calls.



Optional Interface to Garmin Navigation Terminal to provide routing, text messaging and status updates (option only available with POWER-trak3)



CES WIRELESS TECHNOLOGIES CORP.
925-122 S. Semoran Blvd
Winter Park, FL 32792 USA



Tel: 407-679-9440 (USA) 800-327-9956
Fax: 407-679-8110
e-mail: sales@ceswireless.com
Web Site: <http://www.ceswireless.com>



Fleet Management and Navigation Console™

CES Messaging allows you to communicate with your drivers directly using a Garmin navigation unit mounted in the vehicle.

Job Tickets

Send dispatch or work order information created in third party applications to drivers in the field. Simply equip the drivers with an CES POWERtrak3 GPS tracking device connected to a Nuvi 255W or Nuvi 5000W Garmin. Minimize wasted time and money from drivers looking for how to get to the destination or for missed assignments by investing in a GPS tracking device and a Garmin. Drivers can respond with a series of message acknowledgements, canned messages or free entry text. All messages appear in the Silent Passenger inbox.

2 Way Messaging

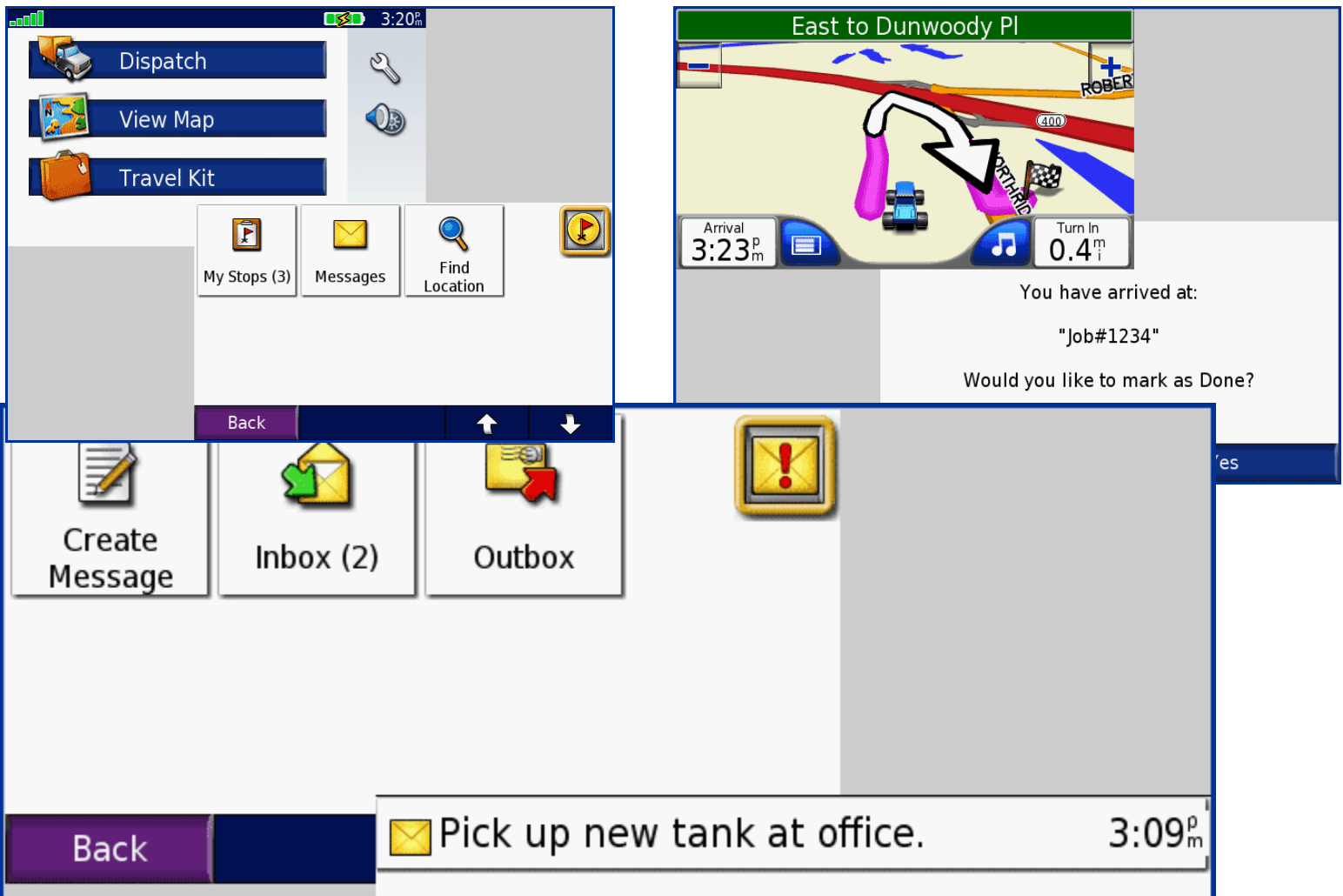
Send messages to each vehicle's Garmin navigation units. Drivers can respond with a series of message acknowledgements, canned messages or free entry text. All messages appear in the Garmin inbox.

Routing

"New destination" messages will appear on a vehicle's Garmin unit to let the driver know the dispatcher has added a new stop. The Garmin unit will automatically navigate to this stop from the vehicle's current location. Turn-by-turn directions

Driver Status

Drivers can set a "status" such as Available, Out to Lunch, or On a Job which can be seen in Silent Passenger™. This will let the dispatcher know which drivers are available for service calls.



POWER-trak3 CAD Job Entry and Dispatch Software

POWER-trak3 Job Manager—Customer Database

Contacts and Jobs

Jobs | Contacts

Search:

Last Name Company Name Telephone Email

Contact ID	First Name	Last Name	Company	Telephone	Email	Address
13	Chik	FilA		407-677-9955		3365 University Blvd
14	Taco	Bell	Taco Bell Casselberry	(407) 339-7979	taco@bell.com	4460 S Highway 17 92
15	New	Contact		123-456-7895		Anchor Rd
16	Chapel	Hill	Cahpel Hill Cementary	321-654-9874		2409 Harrell Rd
17	Valencia	College	VCC	407-699-5000		Econlockhatchee Trail N
18	Florida	Hospital	Florida Hospital-Altamo	(407) 303-4321	flhospital@hos	601 East Altamonte Drive
19	Central Florida	Regional Hospital	Central Florida Region	(407)321-4500	cfl@rr.com	1401 West Seminole Boulevard
20	WP	Memorial	Winter Park Memorial H	(407)646-7000	wp@memhosp	200 North Lakemont Avenue
21	Hunters	Ridge	Hunters Ridge Apts	321-896-5412		Goldenrod Rd N & Hunters Ridge Apartments
22	WP Memorial	Hospital		321-741-8521		235 N Lakemont Ave
23	WP	Village		407-679-1122		436 N Orlando Ave
24	Good	Year	Goodyear Tire & Rubbr	(407) 788-2468	good@wear.co	710 W Hwy 436

POWER-trak3 Job Manager— Job Entry

View Job for Ticket 12/1

Contact

First Name Last Name Company Name

Communication

Telephone

Status Info

Status Vehicle Last Status at

Location

Address Line 1 Address Line 2

City Zip Code County State

Directions and Instructions for vehicle

Other

Last Edited by Last Edited on Created at

Information

Job has registered map coordinates and it is dislaved on the map.

POWER-trak3 Job Manager— Job Dispatch and Status Monitoring

Contact ID	Vehicle	Ticket No	Index	Created At	Job St	Job Status At	First Name	Last Name	Company Name	Address
26	mobi	26/2	31	9/7/2011 9:3	Rejected	1/6/2012 3:42:22 PM	Action	Gator	Action Gator Tires	1070 W Fairbanks Ave
10	mobi	10/1	8	8/2/2011 9:0	Pending	1/6/2012 3:16:15 PM	University of	Central Florida	UCF	Gemini Blvd W
26	garmin	26/2	27	9/7/2011 9:3	Pending	1/6/2012 3:16:44 PM	Action	Gator	Action Gator Tires	1070 W Fairbanks Ave
12	eddie cell	12/1	1	10/13/2011 1	Incomplete	1/6/2012 3:16:31 PM	Doritos	Lays	CES Wireless	925-122 S Semoran Blvd
2	mobi	1	1	7/27/2011 12	Completed	7/27/2011 12:36:39 PM	Doug	Hamilton	CES Wireless and	451 E Altamonte Dr
5	mobi	2	2	7/27/2011 2	Completed	7/27/2011 2:20:21 PM	Ada	Gaston	CES Wireless and	6580 S. Highway 17-92
3	mobi	3	3	7/28/2011 8	Completed	7/28/2011 10:22:27 AM	Terry	Hankins	CES Wireless Tech	1001 Willa
2	mobi	5	0	7/27/2011 8	Completed	7/28/2011 10:22:51 AM	Doug	Hamilton	CES Wireless and	1303
6	mobi	6/1	4	7/28/2011 2	Completed	7/28/2011 3:04:51 PM	Goverment	School		Al-Shahba'a St
7	mobi	7/1	5	7/28/2011 3	Completed	7/28/2011 3:05:20 PM	Poland	Embassy	Poland Embassy	Al-Jabriya, street 3
1	garmin	4	1	8/1/2011 11	Completed	8/1/2011 11:49:34 AM	Eddie	Martinez	CES Wireless and	123 main street
5	garmin	2	2	8/1/2011 11	Completed	8/1/2011 12:28:41 PM	Ada	Gaston	CES Wireless and	6580 S. Highway 17-92
8	mobi	8/1	6	8/1/2011 1:4	Completed	8/4/2011 11:58:34 AM	Full	Sail	FSU	3535 Forsyth Rd
8	garmin	8/1	3	8/1/2011 1:4	Completed	8/11/2011 10:30:54 AM	Full	Sail	FSU	3535 Forsyth Rd
8	garmin	8/1	4	8/1/2011 2:0	Completed	8/1/2011 2:19:35 PM	Blivi	Cash/		2800 South B4

GPS-206 Industrial Miniature Economical GPS Tracking

System Information

Dimensions 64.8 x 61 x 25.6mm L x W x H:
Weight 0.5
Housing: Rugged plastic enclosure
TX Power: Class 4 (2W @850/900 MHz)
Class 1 (1W @1800/1900 MHz)
Frequency: 850/900/1800/1900

GPRS Cellular Packet Data (Enfora Technology)

Mode: Class B, Multislot 10
Protocol: GSM/GPRS Rel 97 AMR Rel 99
Coding Schemes: CS1-CS4
Packet Channel: PBCCH/PCCCH

GPS Functionality

Accuracy: 30 meters
Connector: Fakra
Antenna: 3.3V Active

Environment

Operating: -30°C to +85°C
Storage: -40°C to +85°C
Humidity: Up to 95% non-condensing
Vibration: In accordance with SAE J1211

Antenna:

ANT-16M GPS/GSM Combo - Magnetic mount
(850/900/1800/1900MHZ)
ANT-16B GPS/GSM Combo - Fixed through hole Mount
(850/900/1800/1900MHZ)
ANT-13ARC GPS/GSM Combo - Covert/loose mount
(850/900/1800/1900MHZ)

Programming:

GPS-206S Windows Software

Certification

FCC: Part 15, 22 & 24
GCF: Version 3.27.0
PTCRB: Version 3.12.0
Industry Canada Yes
CE Mark Yes
E-mark: yes
RoHS Compliant: Yes

CES Compatible Mapping/Dispatch Software

FleetLinc - Web Based Subscriber Service
POWER-trak 3 - PC/Client/Server

Data Packets

- I/O Control - Status Change Reports
- GPS TX Interval - GPS Content
- Event Reporting— Timed Reporting
- Distance Reporting - Alarm Reporting
- Geo-Fencing - Max Speed - Virtual Odometer

Interface

SIM Access: External
GSM Antenna: Fakra
I/O Connector: 10 Pin
2 User Inputs (0-40V)
1 Output (0-3V)
Ignition Sense
Serial Data in/out

Power

GSM 850/900 TX/RX - 250 (Avg mA), Idle 1.6 Peak (A)
Idle <40 (Avg mA),
GSM 1800/1900 TX/RX 215 (Avg mA), Idle 1.3 Peak (A),
Idle <40 (Avg mA),

Battery Specifications

The GPS-206 uses power either from the vehicle battery, or from an optional internal battery.

The battery specifications are as follows:

Nominal voltage: 3.6 VDC
Nominal Capacity: 230 mA/H when discharged at 46mA to 2.5V
Maximum and Normal Charge voltage 4.2 V
Minimum discharge voltage: 2.5V
Charge current: 100mA

Warranty

One Year

Ordering

- ◆ GPS-206 GPS/GSM/GPRS Tracking and Fleet Management Device
- ◆ HARNESS-057 DC cable, Inputs/Outputs/Ignition
- ◆ CD-SOFT1 Programming Software/Manual or download from FTP site
- ◆ ANT-16M GPS/GSM Combo - Magnetic mount (850/900/1800/1900MHZ)
- ◆ ANT-16B GPS/GSM Combo - Fixed through hole Mount (850/900/1800/1900MHZ)
- ◆ ANT-13ARC GPS/GSM Combo - Covert/loose mount (850/900/1800/1900MHZ)
- ◆ PRG-03 Programming cable - 12-Pin serial I/O cable with DB-9 connector